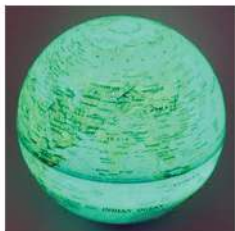


Glob Berputar Magic 4 Dalam 1 (1.1kg)

(4 In 1 Magic Revolving Globe)

Code : IT - 049/ WM 288/ EM 315 (Set of 4)



Features:-

- Material (Plastic)
- High quality
- A rotating globe ornament.
- Requires 1 x AA battery (not included).
- Beautifully detailed with all countries and geographic areas.
- The LED bulb inside the globe changes 4 different colors, Green/Red/Blue/Orange.



6 in 1 Educational Battery Operated Kit (Set of 5) (1.4kg)

Investigating Science & Technology

Code : ITSC - 002/ WM 290/ EM 320

- D.I.Y Robot kit serves as an innovative teaching aid and activity in school.
- This product is skillfully manufactured using improved superior material, safe, durable, nontoxic, lightweight and attractive colour.
- Teach children the benefits of 6 in 1 educational battery operated kit while they create a robot that is both fun to play and learn about physics, mechanics, electronics and artificial intelligence.



+1.5V
2 x UM-4 AAA
(not included)
10+
Age to up

Battery operated Revolving Plane Size: (W)23cm x (D)6.2cm x (H)8cm
Battery operated vehicle Size: (W)7cm x (D)5.5cm x (H)6.5cm
Battery operated Puppy Size: (W)8cm x (D)5cm x (H)8cm
Battery operated Plane Size: (W)17cm x (D)6.2cm x (H)8cm
Battery operated Air boat Size: (W)12cm x (D)6.2cm x (H)8cm
Battery operated Windmill Size: (W)16cm x (D)15.5cm x (H)24.5cm



Wild Animals (12 types) (3.6kg)

Code : ITSC - 003/ WM 250/ EM 270



Farm Animals (16 types) (1.3kg)

Code : ITSC - 004/ WM 160/ EM 175



Sound Of Animals (6 types) (1.2kg)

Code : ITSC - 005/ WM 235/ EM 255



Insect & Small Creatures (16 types)

Code : ITSC - 006/ WM 115/ EM 125 (0.5kg)



Fruits (Set B) (Set of 11) (2.1kg)
Code : ITSC - 008/ WM 275/ EM 300



Vegetables (Set A) (Set of 12) (1.5kg)
Code : ITSC - 009/ WM 235/ EM 255



Vegetables (Set B) (Set of 12) (2kg)
Code : ITSC - 010/ WM 235/ EM 255



Replika Buah-Buahan Tempatan
Code : ITSC - 043/ WM 155/ EM 165 (1.3kg)
(10pcs)



Replika Buah-Buahan Luar Negara

Code : ITSC - 044/ WM 155/ EM 165 (0.6kg)

(10pcs)



Replika Sayur-Sayuran (1.1kg)

Code : ITSC - 049/ WM 180/ EM 198



Model Farm Animals Set (0.7kg)

Code : ITSC - 045/ WM 110/ EM 120 **(20 pcs)**



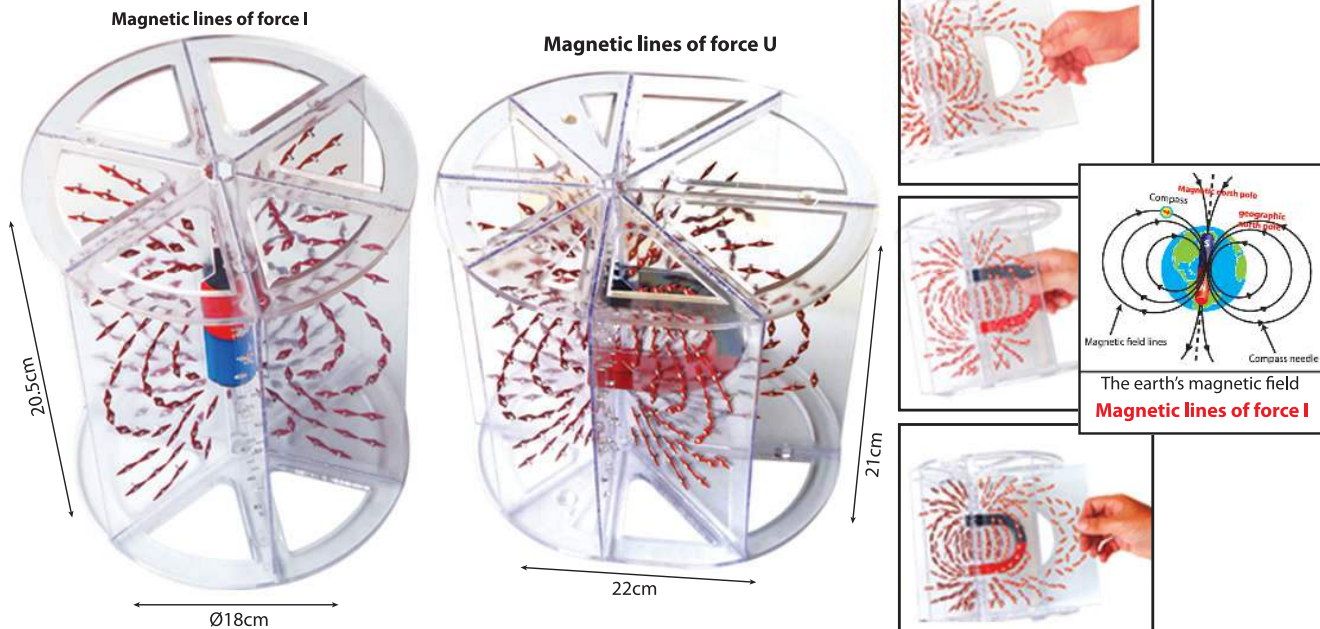
Ocean Animals Set (18pcs) (1.1kg)

Code : ITSC - 047/ WM 168/ EM 185



Magnetic Field (Set of 2) (2.1kg)

Code : ITSC - 011/ WM 350/ EM 385

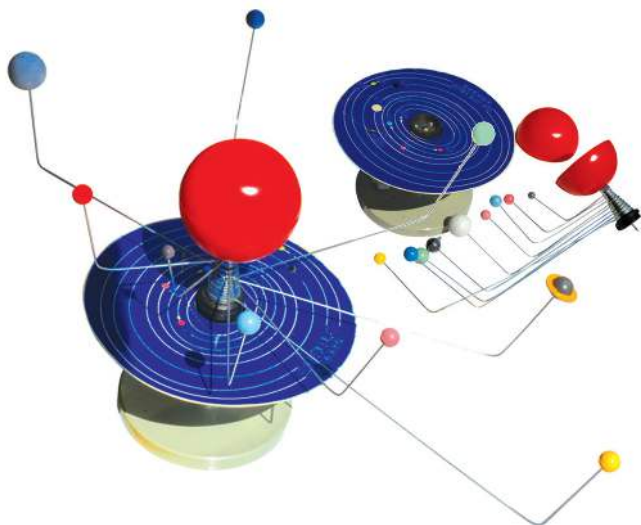


Solar System Simulator (1kg)

Code : ITSC - 013/ WM 300/ EM 330

Educational Equipment

Size: 69cm (W) x 59cm (D) x 29cm (H)



Three Global Model (1.1kg)

Code : ITSC - 014/ WM 275/ EM 300

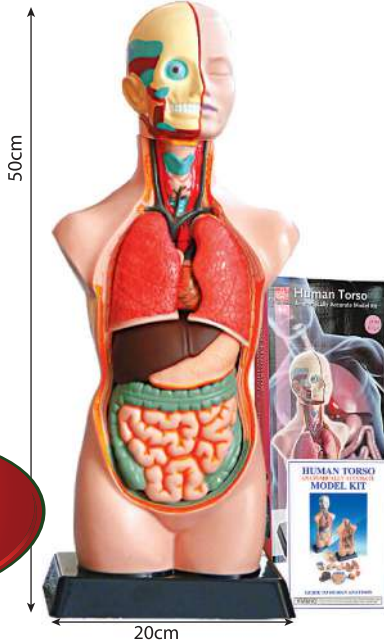
Size: 42cm (W) x 23cm (D) x 29cm (H)



Unbreakable Human Torso (2kg)

Code : ITSC - 018/ WM 550/ EM 600

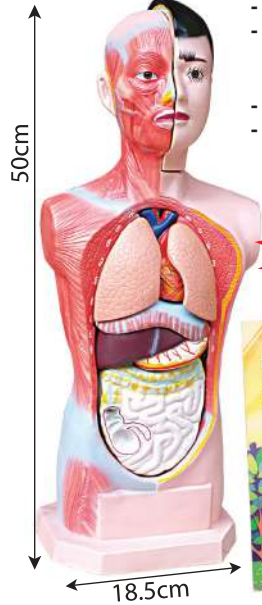
- Hand painted in vivid and natural colours
- Full illustrated colour instruction manual
- 11 Dissectible parts
- Unbreakable
- ABS Base



Human Torso (9 Parts) (2kg)

Code : ITSC - 026/ WM 350/ EM 380

- Exact likeness of human body.
- Includes the right and left lungs, heart, stomach, liver, intestines, half of the right kidney & others.
- Removable parts
- Mounted on base



Magnetic Floating Ring (0.1kg)

Code : ITSC - 019/ WM 35/ EM 39



- This amazingly simple ring magnet set is a great demonstration of magnetic fields.
- Each ring is magnetic, one side positive and the other negative.
- The colorful magnets float effortlessly above each other!
- Each set includes four colourful ring magnets and one stand.

Powerful Periscope (1kg)

Code : ITSC - 021/ WM 200/ EM 220

Size: Extends From 33cm (13") to 56cm (22")



Microscope Set In Hand Carrying Case (1.7kg)

Code : ITSC - 020/ WM 320/ EM 350

300x 600x & 1200x Magnifications
 Built-in light for direct illumination
 Reflecting mirror for nature illumination
 Battery compartment AA x 2
 Case size : (W)39 x (H)35cm
 Microscope size : (W)14 x (H)23cm



Handheld Telescope With Aluminium Tripod (525x Astrolon)TM

Code : ITSC - 022/ WM 650/ EM 700 (3.8kg)



31.7MM
EYEPIECES



3X BARLOW
LENS



1.5X ERECTING
EYEPIECE



6X FINDERSCOPE
WITH CROSSHAIR
(25MM)



ACCESSORY
TRAY



PRECISION
CONTROL
SYSTEM



Precision optics
 525 power
 Precision control system

Diagonal Viewer & 4
interchangeable eyepieces

WARNING!
 Not recommended for children under 8 years old of age.
 Not suitable for children under 3 years old due to small parts.

CAUTION!
 Do not look at the sun without sun-filter as it may cause serious injury to your eyes.
 (Sun-Filter is **NOT INCLUDED** in this set)

Smart Construction Block (3.3kg)

Code : ITSC - 029/ WM 240/ EM 255



Sesuai mengikut silibus pelajaran Sains dan Teknologi Tahun 2



Asas Teknologi Set Binaan KSSR Tahun 2

Code : ITSC - 032/ WM 390/ EM 430 (4.4kg)



- Asas teknologi set binaan ini membolehkan murid-murid menjalani aktiviti membina pelbagai jenis model.
- Berfungsi untuk **melatih murid-murid bagaimana cara memasang komponen set binaan, melakar hasil binaan dan menceritakan hasil binaan.**
- Memberi peluang kepada murid untuk meluahkan idea, perasaan, kreativiti dan manipulatif.
- Membolehkan murid mengenal dan meneroka ciri-ciri objek (saiz, bentuk, warna dan tekstur).
- Murid-murid juga digalakkan untuk mereka cipta pelbagai model sendiri.
- Pelbagai manfaat dari segi perkembangan mereka cipta - secara fizikal, emosi, sosial intelektual dan disiplin.

- Disamping itu set binaan ini juga dapat membantu murid meningkatkan perkembangan koordinasi mata-tangan serta memperluaskan tahap perkembangan kreativiti mereka.
- **Turut disertakan dengan 12 buku panduan**
- Peralatan ini sesuai digunakan untuk murid sekolah rendah dan mengikut Kurikulum.
- Piawaian Sekolah Rendah dari Kementerian Pelajaran Malaysia.
- A Maxi : (L)40 x (P) 20 x (T) 60mm / H Maxi : (L)40 x (P)20 x (T)80mm
- Roda Maxi : (L)40 x (D)75mm / Rod Segiempat
- Tepat (Maxi) : (L)20 x (T)95mm /
- Roda Bentuk Bulat (Maxi) : (L)20 x (T)80mm



Mengikut Silibus Dunia Sains dan Teknologi Tahun 2, UNIT 5 "ASAS TEKNOLOGI" 二年级科学与工艺世界 KSSR 单元第五课 106面 "工艺的基础"



Set Spring Pelbagai Jenis (1.2kg)

Code : ITSC - 015/ WM 200/ EM 220

Kotak kecil	18.5cm (P) x 15.5cm (L) x 4cm (T)
Kotak Besar	26cm (P) x 18.5cm (L) x 4.5cm (T)



36 jenis : 180 Biji Spring / Set

Kotak Kecil : 20 jenis x 5 biji

Kotak Besar : 16 jenis x 5 biji

- Direka dengan 2 saiz spring pelbagai jenis.
- 16 jenis spring besar dan 20 jenis spring kecil.
- Warna besi krom.

Asas Magnet dan Fungsi

Code : ITSC - 030/ WM 190/ EM 209

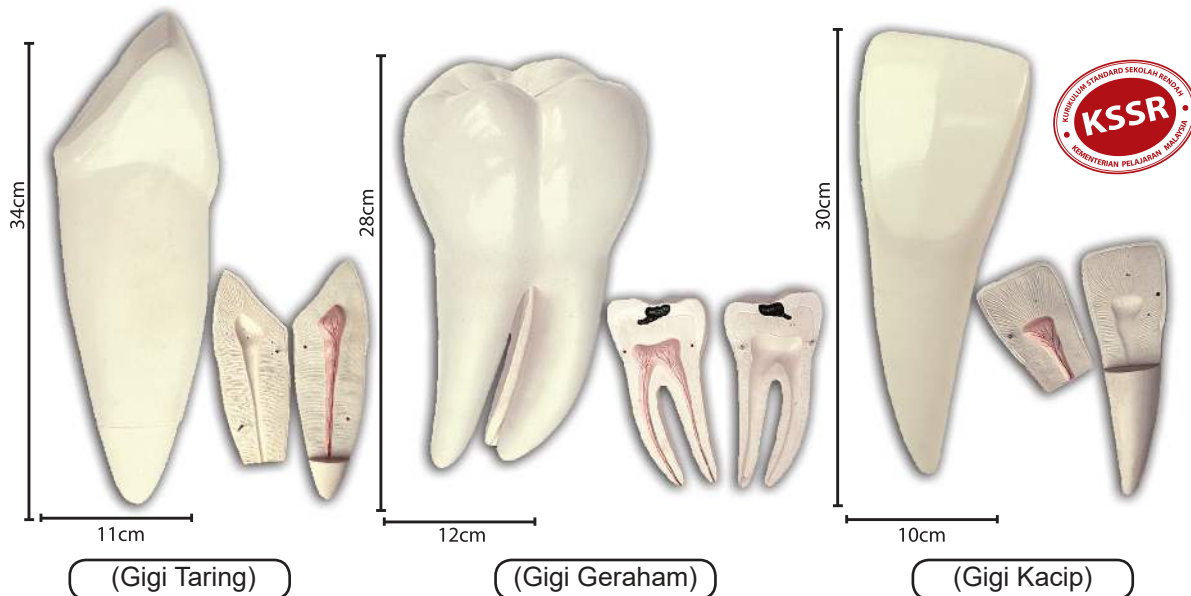
Set mengandungi
4 pemegang magnetik
dan 400+- cip
(warna-warni)



3 in 1 Model Gigi (Gigi Geraham, Gigi Taring, Gigi Kacip) (1.4kg)

Code : ITSC - 033/ WM 270/ EM 295

Material: Plastik berkualiti (PVC)



Set Asas Eksperimen Sains Dan Sukatan (0.9kg)

Code : ITSC - 035/ WM 200/ EM 220

Set mengandungi:

- Bikar 100ml
- Bikar 200ml
- Bikar 300ml
- Bikar 500ml
- Bikar 1000ml
- Tiub U x2
- Tabung uji x6
- Botol reagen 500ml
- Rak tabung uji



Set Peralatan Uji Kaji Sains Awal

Code : ITSC - 024/ WM 160/ EM 175 (0.4kg)

(W)23 x (D)9.5 x(H)8.5

Tidak mudah pecah



Plastik Berkualiti

Plastic Regent Bottle (50g)

Code : ITSC - 038/ WM 30/ EM 33



500ml

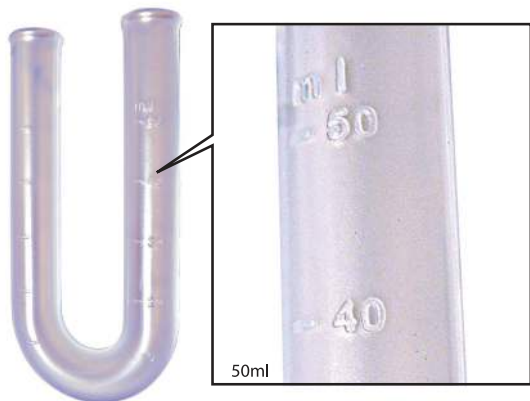
Plastic Measuring Beakers (5pcs)

Code : ITSC - 037/ WM 70/ EM 77 (160g)



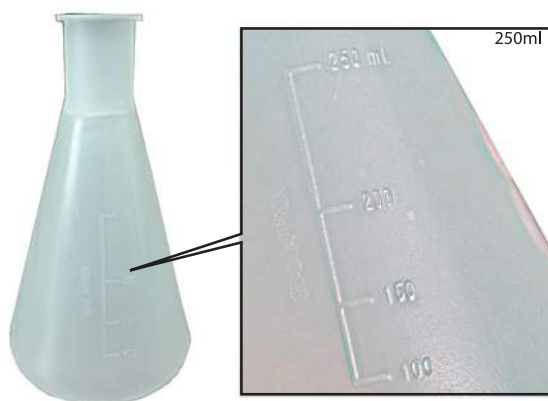
Plastic U Tiub (30g)

Code : ITSC - 039/ WM 28/ EM 31



Plastic Kelalang Kon (50g)

Code : ITSC - 040/ WM 28/ EM 31



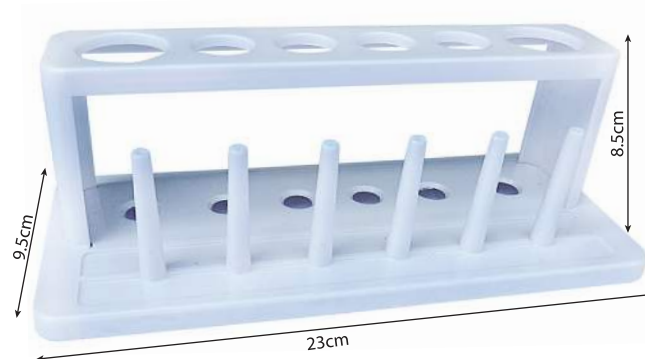
Plastic Tabung Uji (6pcs) (60g)

Code : ITSC - 041/ WM 15/ EM 16



Plastic Rak Tabung Uji (110g)

Code : ITSC - 042/ WM 28/ EM 31



Set Binaan Gemilang (4.5kg)
Code : ITSC - 053/ WM 288/ EM 316

SET BESAR

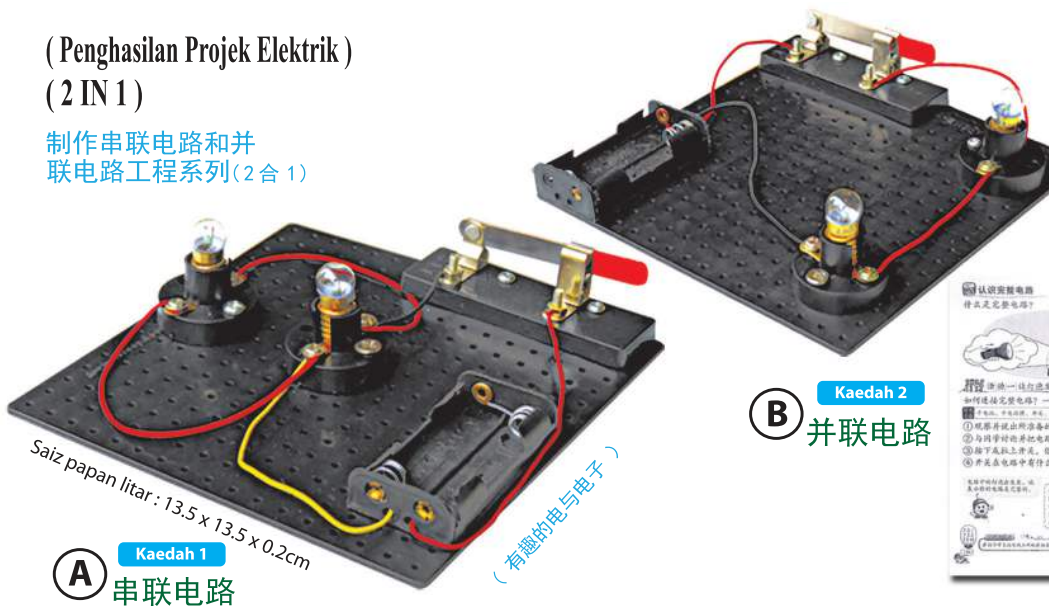
**APROXIMATELY
400-500PCS**



Projek Litar Siri Dan Litar Selari (Set of 40) (3.1kg)
Code : ITKH - 029/ WM 340/ EM 370

(Penghasilan Projek Elektrik)
(2 IN 1)

制作串联电路和并
联电路工程系列(2合1)



Saiz papan litar : 13.5 x 13.5 x 0.2cm

(有趣的电与电子)

B Kaedah 2
并联电路



Stethoscopes Learner (0.12kg)

Code : ITSC - 058/ WM 70/ EM 77 (1 Unit)

Alat ini boleh digunakan oleh murid-murid untuk mempelajari mendengar degupan jantung dan denyutan nadi dengan lebih jelas.



Size : (P)76cm

Educational Horseshoe Magnet Kit

Code : ITSC - 055/ WM 120/ EM 135 (800g)



Kertas Litmus (Merah) (10g)

Code : ITSC - 056/ WM 10/ EM 11



Kertas Litmus (Biru) (10g)

Code : ITSC - 057/ WM 10/ EM 11



QTY : 5 Booklets
(100 SHEETS)
Size : (L) 3cm x (P) 6.5cm
Weight : 40 gram

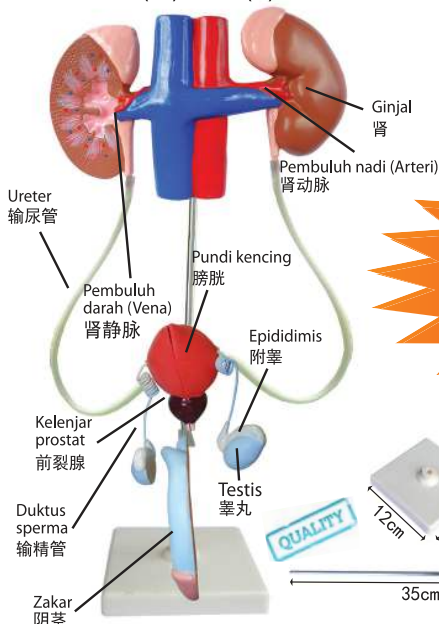
Bahan Bantu Mengajar

Model Sistem Pembiakan Lelaki (0.60kg)

Code : ITSC - 050/ WM 180/ EM 198

男性生殖器官教学模型

SIZE : (W)19.5 x (H)43cm

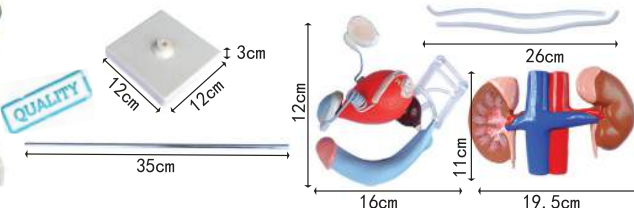


第二页

“男性和女性生殖器官的构造”
被列为教科书，KSSR 五年级
健康教育课程。

PENDIDIKAN KESIHATAN TAHUN 5
MUKA SURAT 2 - KSSR

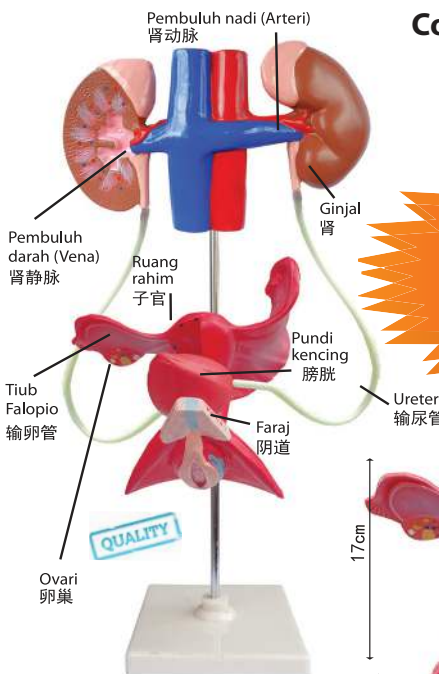
Bahan: PVC plastik



Model Sistem Pembiakan Perempuan (0.7kg)

Code : ITSC - 051/ WM 180/ EM 198

女性生殖器官教学模型

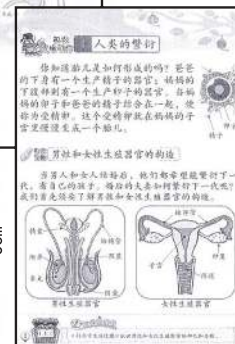
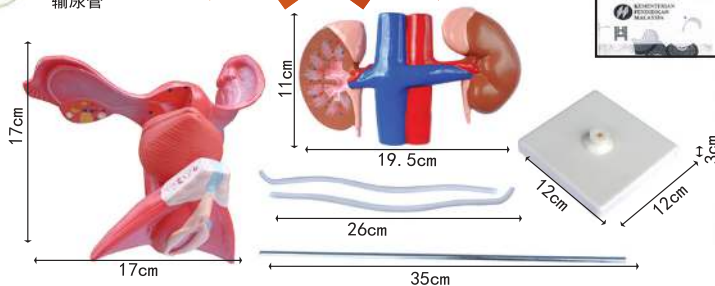


第二页

“男性和女性生殖器官的构造”
被列为教科书，KSSR 五年级
健康教育课程。

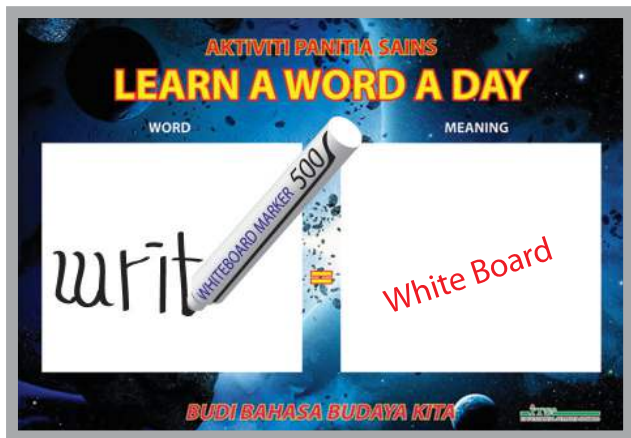
PENDIDIKAN KESIHATAN TAHUN 5
MUKA SURAT 2 - KSSR

Bahan: PVC plastik



SIZE : (W)19.5 x (H)43cm

Papan Aktiviti Panitia Sains (2.2kg)
Code : IT - 030/ WM 300/ EM 330



Size : 2' x 3' (Eraser Board)

Poster Keselamatan Makmal Sains
Code : ITSC - 062/ WM 250/ EM 275

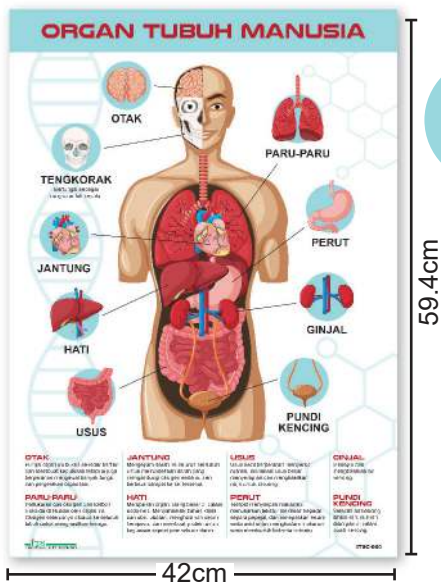
Saiz: A2
Material: 5mm
KT Foam Board

Set of 5pcs



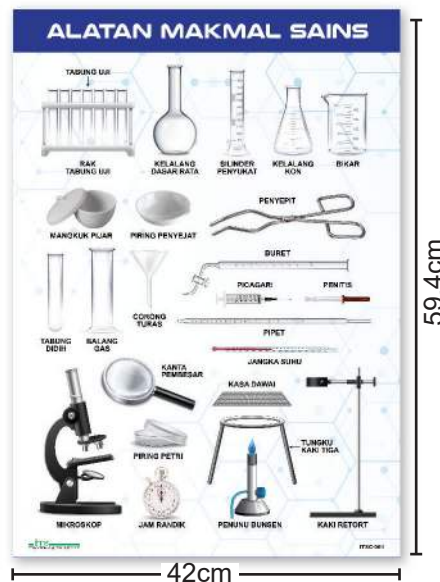
Poster Organ Tubuh Manusia (0.1kg)
Code: ITSC - 060 WM 50/ EM 55

Saiz: A2 (42cm x 59.4cm)
Material: PP Whitesticker on 5mm KT Foam Board.



Poster Alatan Makmal Sains (0.1kg)
Code: ITSC - 061 WM 50/ EM 55

Saiz: A2 (42cm x 59.4cm)
Material: PP Whitesticker on 5mm KT Foam Board.



Carta Malaysia Ke Angkasa (1.1kg)

Code : ITC - 001/ WM 395/ EM 420



-10 Carta
-1 Buku Panduan

Coloured Tangram (Set of 10) (4.3kg)

Code : ITAT - 096/ WM 220/ EM 230



Permainan ini berfungsi meningkatkan IQ kanak-kanak melalui proses binaan sendiri dalam mereka sesuatu bahan permainan (DIY).

Giant Dental Model With Tooth Brush

Code : AS - 0009/ WM 220/ EM 240 (1.4kg)



Dental Size : (W)17 x (D)23 x (H)20cm
Tooth Brush : (W)3 x (L)37cm

Kegiatan Manusia (Dental Model)

Code : AS0009B/ WM 120/ EM 135

Size: 9.5cm x 7.5cm x 5.5cm



Human Skeleton Life-Size Model (10kg)

Code : ITSC - 064/ WM 1600/ EM 1760

- Tulang manusia dengan saiz sebenar, **tinggi: 175cm**
- Untuk pembelajaran anatomi, biologi, dan perubatan.
- Menunjukkan struktur rangka manusia bersaiz sebenar termasuk tulang, sendi, dan hubungan anatomi.
- Rahang boleh di buka tutup.
- Datang dengan stan beroda untuk mudah di bergerak.
- Digunakan oleh pelajar, profesional kesihatan, dan penyelidik untuk memahami konsep anatomi yang kompleks.
- Dibuat daripada resin atau plastik berkualiti tinggi.
- Disertakan **kad rujukan saiz A4**.
- Dilengkapi sendi bergerak untuk menunjukkan pergerakan dan fungsi biomekanik.
- Membantu memahami kedudukan tulang dan kaitannya dengan sistem tubuh lain.



Kad rujukan A4



PEMASANGAN MUDAH
BERKUALITI
TAHAN LAMA

Model Rangka Burung Merpati (0.8kg)

Code : ITSC - 065/ WM 299/ EM 329

Dengan kotak *arcrylic* dan tapak plastik.
 Dengan kad rujukan A5 (dwibahasa).

Saiz:

17.5cm (L)

13.5cm (W)

21.5cm (H)



Model Rangka Arnab (1kg)

Code : ITSC - 091/ WM 336/ EM 370

Dengan kotak *arcrylic* dan tapak plastik.
 Dengan kad rujukan A5 (dwibahasa).

Saiz: **35cm (L) x 12cm (W) x 19cm (H)**



Model Tengkorak Haiwan (3pcs)

Code : ITSC - 071/ WM 429/ EM 472 (1.8kg)

Tiga jenis tengkorak.



Herbivor, Karnivor & Omnivor

Model Gigi Susu (0.3kg)

Code : ITSC - 072/ WM 50/ EM 55

Saiz: **6.5cm (L) x 6cm (W) x 4cm (H)**



Dengan berus gigi

Model Struktur Gigi (0.9kg)

Code : ITSC - 069/ WM 230/ EM 253

Dengan tapak plastik dan kad rujukan A5.
6.5cm (L) x 6cm (W) x 4cm (H)



Model Keratan Rentas Struktur Gigi (dengan Gusi) (1.2kg)

Code : ITSC - 076/ WM 290/ EM 320

Dengan tapak plastik dan kad rujukan A5.
25.5cm (L) x 16.5cm (W) x 29.8cm (H)



Model Gigi Kekal (32 Gigi) (1kg)

Code: ITSC - 074/ WM 320/ EM 355

Model gigi manusia dewasa.
Saiz: 24.5cm x 17cm x 18.5cm



Model Gigi Kekal (28 Gigi) (1kg)

Code : ITSC - 068/ WM 220/ EM 242

Saiz: 15cm (L) x 20cm (W) x 13cm (H)

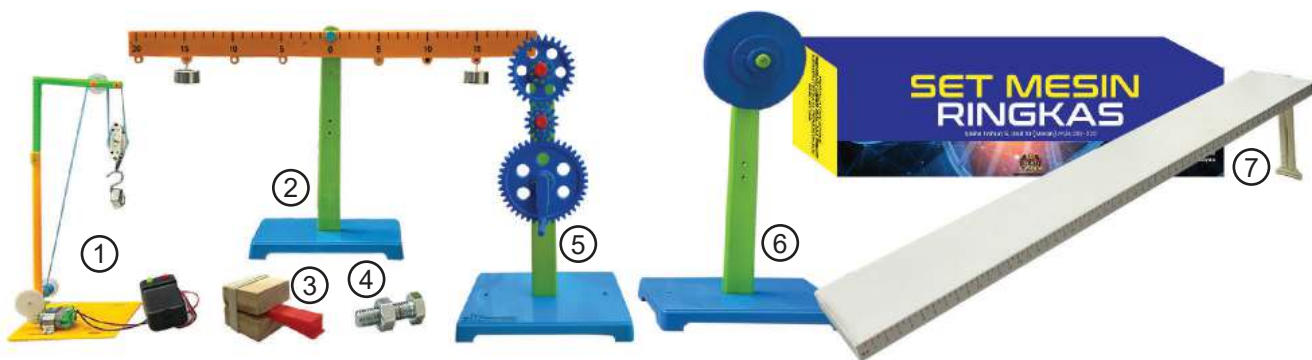


Dengan
berus gigi

Set Mesin Ringkas (1 Set 7 Kit) (1.5kg)

Code : ITSC - 070/ WM 495/ EM 540

- Set Mesin Ringkas mengandungi 7 kit model yang mengikut silibus buku teks sains sekolah rendah.
- Kit model mudah pasang ini memudahkan guru-guru untuk menunjukkan bagaimana setiap mesin ringkas berfungsi.
- Set ini memudahkan murid memahami cara mesin ringkas berfungsi melalui aktiviti hands-on.
- Meningkatkan minat murid terhadap sains melalui eksperimen yang interaktif.



1. Takal - 2. Tuas - 3. Baji - 4. Stainless steel skru - 5. Gear - 6. Roda dan Gandar - 7. Satah condong

Kit Eksperimen Satah Condong (1 Set) (2.2kg)

Code: ITSC - 092/ WM 199/ EM 219

Saiz papan satah condong:
60cm (panjang) x 10cm (lebar).
Pembaris sudut 0-45 darjah.

Set ini mengandungi:

- 1 papan kayu satah condong
- 1 pembaris sudut besi (dengan pemegang)
- 1 bongkah beban kayu
- 1 kereta mini plastik
- 1 piring
- 1 cangkuk
- 5 takal



**SET LENGKAP!
UNTUK EKSPERIMEN
DAYA GESERAN
SAINS TAHUN 6**



Model Torso Manusia (25 Bahagian) (9kg)

Code : ITSC - 093/ WM 1490/ EM 1640

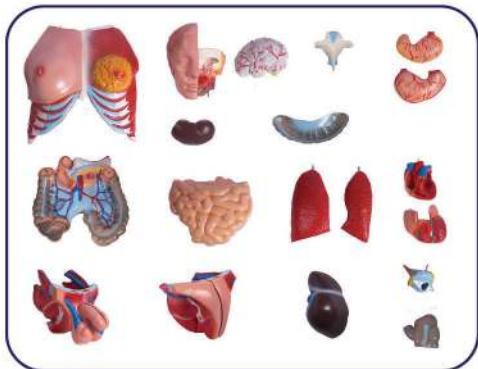
Saiz: 85cm (T) x 33cm (P) x 25cm (L)

Diperbuat daripada plastik non-toksik (tubuh plastik solid, organ plastik lembut).

Dipasang di atas dasar plastik dan boleh dibuka kepada 25 bahagian.

Membantu pelajar memahami struktur tubuh manusia secara 3D dengan lebih interaktif.

Sesuai untuk kelas biologi atau makmal sains, membolehkan pelajar melihat, menyentuh dan membuka organ untuk memahami kedudukannya dengan tepat.

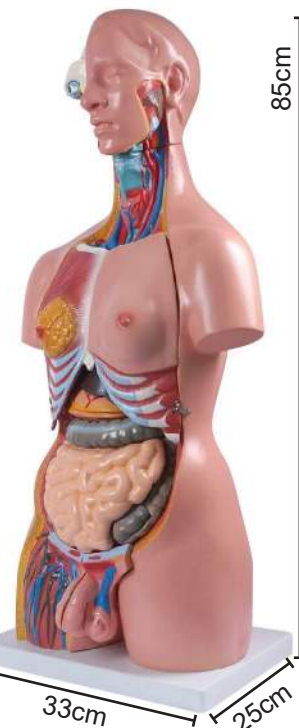


BAHAGIAN BOLEH BUKA

- 1 kepala
- 1 bahagian dada
- 1 otak
- 1 mata
- 1 appendiks
- 1 vertebrae
- 2 bahagian perut
- 2 paru-paru
- 1 hati
- 1 ginjal
- 1 usus kecil
- 2 bahagian usus besar
- 2 bahagian jantung
- 4 organ pembiakan lelaki
- 4 organ pembiakan perempuan

KUKUH

TAHAN LAMA



Set Binaan Sains (1.5kg)

Code: ITSC - 067/ WM 220/ EM 245



Set Binaan (Blocks) (2.5kg)

Code: ITSC - 075/ WM 290/ EM 320

Set mengandungi 400 (+-) unit blok.

Manual pemasangan dengan lebih 10 rekaan.



**400(±)
pcs**

Mesin Ringkas (Stem Kit) (1 Set) (1kg)

Code : ITSC - 077/ WM 266/ EM 296

Mengandungi item yang boleh dipasang menjadi roda dan gandar, gear, takal, satah condong serta tuas. Diperbuat daripada PVC yang tahan lasak. Dengan manual pemasangan bergambar.

EKSPERIMEN:

1. Daya Geseran
2. Mesin Ringkas: Roda dan Gandar
3. Mesin Ringkas: Sistem Tuas Kelas 1
4. Mesin Ringkas: Sistem Tuas Kelas 3
5. Mesin Ringkas: Sistem Takal Tetap
6. Mesin Ringkas: Sistem Takal Bergerak
7. Mesin Ringkas: Sistem Takal Gabungan
8. Mesin Ringkas: Satah Condong
9. Mesin Ringkas: Sistem Gear Ringkas
10. Sistem Mekanikal: Sistem Gear
11. Sistem Mekanikal: Sistem Tali Sawat
12. Sistem Mekanikal: Gegancu dan Rantai
13. Sistem Gear dan Sistem Elektro-Mekanikal



Landasan Troli (1 Papan/1 Kereta)

Code : ITSC - 066/ WM 260/ EM 290 (7.5kg)

Saiz: 240cm x 30cm 2cm (tebal)

Percuma kereta mini (alloy)

Set: 1 papan dan 1pcs kereta mini.

Diperbuat dari kayu berkualiti, licin.

Dipasang besi logam

di kiri dan kanan.



Saiz kereta:
13.3cm x 4.9cm x 5.3cm

Kit Aerofoil (1 Unit) (3kg)

Code: ITSC - 085/ WM 390/ EM 430

Saiz: 52cm x 16cm x 15cm

Membantu pelajar memahami konsep tekanan dan daya angkat (lift) seperti pada sayap kapal terbang.

Dalam silibus KSSM
Buku Teks Fizik (Ting. 5)
Bab 2: Tekanan



Alat Pengukur Tekanan Darah (0.8kg)
Code: ITSC - 078/ WM 290/ EM 320 (1 Unit)

Saiz: 13.4cm x 10.3cm x 6cm
 Disertakan beg simpanan.
 4 x bateri 1.5V AA (tidak dibekalkan).



Blood Pressure Monitor (1 Unit)
Code : ITSS - 046/ WM 180/ EM 198 (0.6kg)

Monitor size: 132mm (L) x 101mm (W) x 52mm (H)
 Cuff size: Standard size 220-320mm

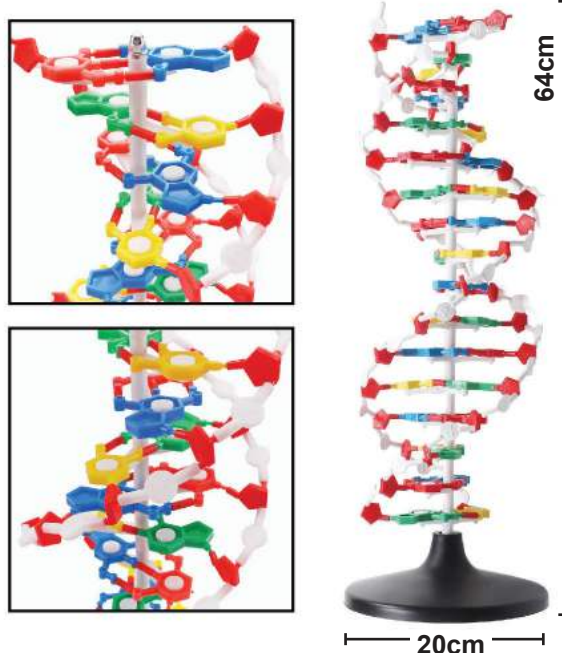


Kit Pemalar Planck (1 Unit) (6kg)
Code : ITSC - 086/ WM 2990/ EM 3290

Saiz: 48cm x 20cm x 17cm
 Disertakan manual.
 Kit eksperimen untuk mengukur nilai pemalar Planck (h) menggunakan kesan fotoelektrik.
 Direka khas untuk pengajaran dan pembelajaran Fizik Tingkatan 5, Bab 7: Kuantum Cahaya.



Model 3D DNA (1 Unit) (1.2kg)
Code : ITSC - 088/ WM 295/ EM 305



Skinfold Caliper (1 Unit) (1.5kg)

Code : IT - 096/ WM 1200/ EM 1300

Saiz Caliper: **33cm x 16cm.**

Dengan kotak simpanan.



Skinfold Body Fat Caliper (1 Unit)

Code: ITSS - 050/ WM 90/ EM 99 (0.3kg)

Saiz Caliper: **27cm x 24.5cm.**

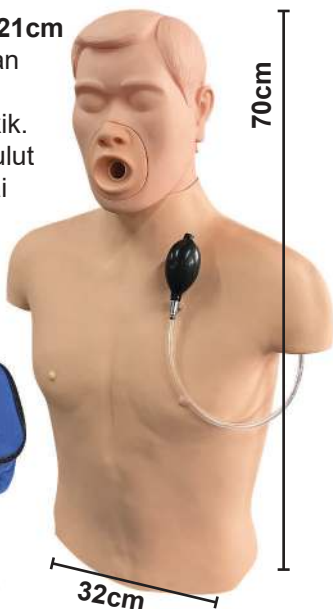
Dengan manual lengkap.



Model Manikin Latihan Heimlich Maneuver (1 Unit) (7.5kg)

Code : ITSC - 081/ WM 2400/ EM 2640

- Saiz: **70cm x 32cm x 21cm**
- Digunakan untuk latihan amali teknik Heimlich apabila mangsa tercekik.
- Dibekalkan dengan mulut gantian, kapas sebagai bahan tercekik, dan manual panduan.
- Dibekalkan dengan beg simpanan.



Model Manikin Latihan CPR (1 Unit)

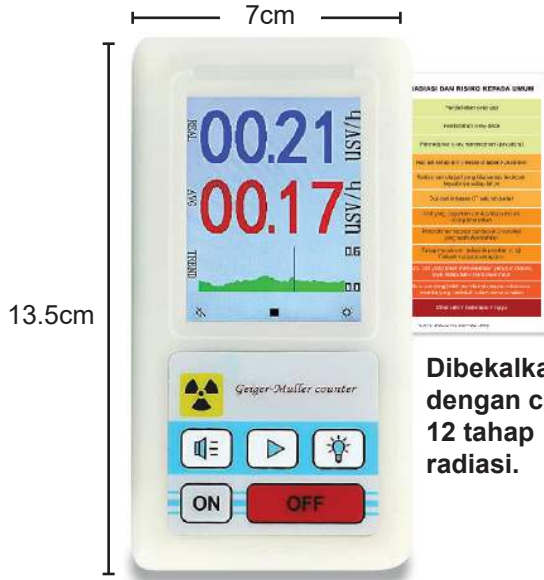
Code : ITSC - 082/ WM 1800/ EM 1980 (3.5kg)

- Saiz: **62cm x 28cm x 9cm**
- Saiz dewasa (adult) untuk latihan yang lebih tepat.
- Dibekalkan dengan pelapik mulut dan beg udara (bag of lungs).
- Dibekalkan dengan manual pengguna dan beg simpanan.



Alat Pengesan Sinar Latar Belakang (1 Unit) (0.3kg)

Code: ITSC - 079/ WM 550/ EM 605



Dibekalkan dengan carta 12 tahap radiasi.

Alat Pengukur Latitud & Longitud GPS S4 (1 Unit) (0.4kg)

Code: ITSC - 080/ WM 1190/ EM 1310

Dilengkapi Barometer untuk bacaan altitud.



KALIS HABUK & AIR

Nuclear Radiation Detector (1 Unit)

Code : ITSC - 096/ WM 650/ EM 715 (0.3kg)



Dibekalkan dengan carta 12 tahap radiasi.

GPS Pegangan Tangan S8 (1 Unit)

Code : ITSC - 095/ WM 1190/ EM 1310 (0.4kg)

Menyokong banyak sistem satelit (multi-GNSS).



KALIS HABUK & AIR

Sistem Photogate (Bola Keluli, Pelepas Dan Penangkap & Pemasa Elektronik) **(1 Set)**

Code: ITSC - 083/ WM 2950/ EM 3250 (5.5kg)

- Kit bersaiz **250mm x 225mm x 1290mm**.
- Tiang dengan ketinggian 1200 mm.
- Bebola keluli berdiameter 10 mm dan 18 mm.
- Dibekalkan dengan manual pengguna.



**Dalam silibus KSSM
(Fizik Tingkatan 4
Bab 3: Kegravitian)**

Kit Eksperimen Pecutan Gravitasi

Code: ITSC - 098/ WM 2100/ EM 2300 (4kg)

- Kit bersaiz **310mm x 310mm x 1380mm**.
- Tiang dengan ketinggian 1200 mm.
- Bebola keluli berdiameter 10 mm dan 18 mm.
- Dibekalkan dengan manual pengguna.



Kit Meja Daya Vektor (1 Set) (6kg)

Code: ITSC - 084/ WM 1460/ EM 1610

- Meja logam berdiameter 300 mm.
- Set pemberat (50g /pcs).
- 3 unit neraca spring.



Vector Force Table (1 Set) (1.8kg)

Code: ITSC - 097/ WM 840/ EM 920

- Meja plastik berdiameter 300 mm.
- Set pemberat (50g /pcs).
- 3 unit neraca spring.



Detektor Radiasi Nuklear (1 Unit)

Code : ITSC - 100/ WM1798/ EM 1968 (0.4kg)



Handheld GPS (1 Unit) (0.4kg)

Code : ITSC - 099/ WM 989/ EM 1080



**Mercurial Desk Model (1kg)
Sphygmomanometer (1 Unit)**
Code : ITSS - 008/ WM 330/ EM 360



Deluxe Teaching Stethoscope (0.5kg)
Code: ITSS - 011/ WM 220/ EM 240 (1 Unit)



Inverted Prism Glasses (1 Unit)
Code : ITSS - 015/ WM 220/ EM 240 (0.2kg)
Saiz: 13.5cm x 17cm x 2cm



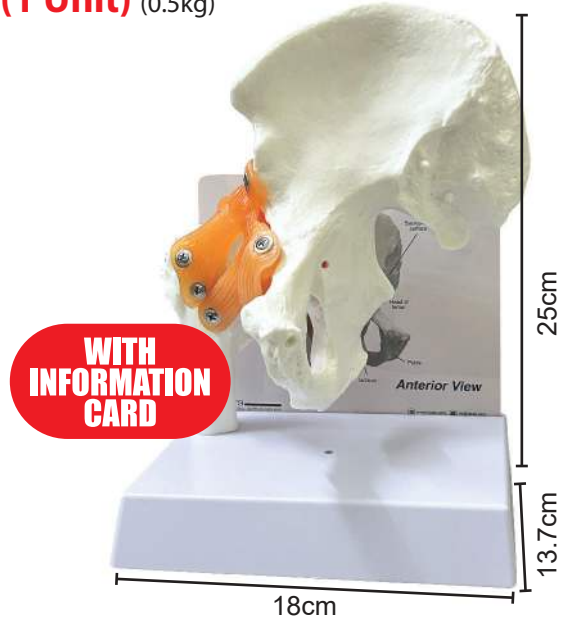
Prism Spectacles (1 Unit) (0.3kg)
Code : ITSS - 049/ WM 240/ EM 260
Saiz: 20.5cm x 16cm x 4.5cm



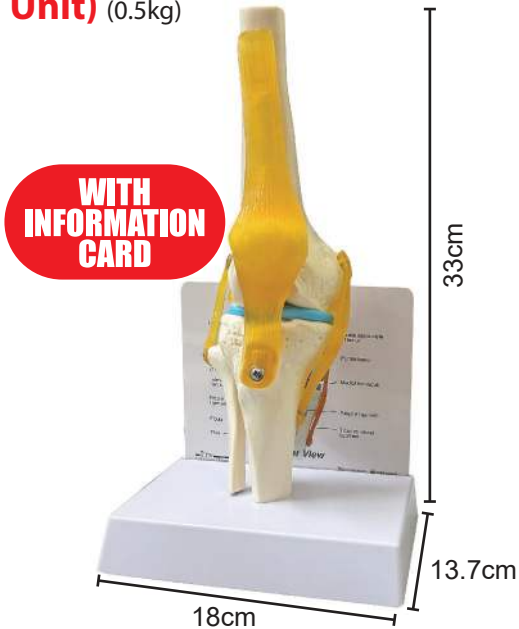
Anatomical Model: Basic Shoulder Joints (1 Unit) (0.3kg)
Code: ITSS - 034/ WM 215/ EM 236



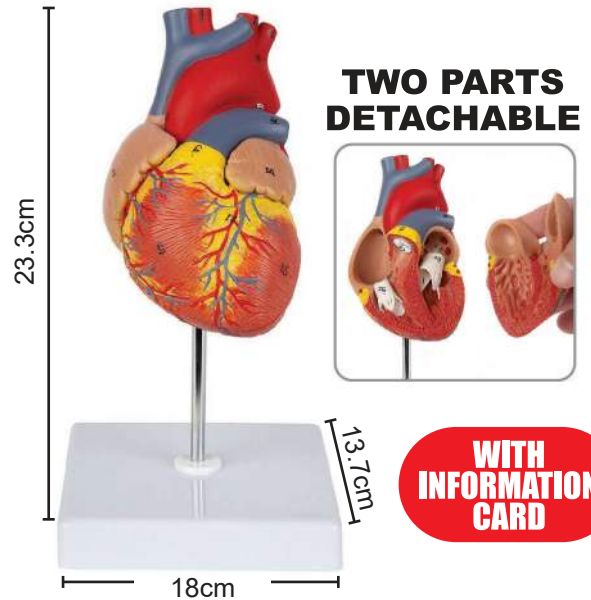
Anatomical Model: Basic Hip Joints
Code: ITSS - 035/ WM 215/ EM 236
(1 Unit) (0.5kg)



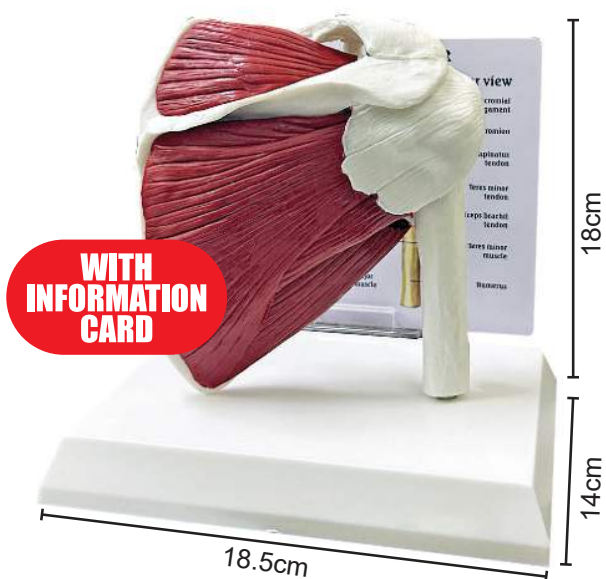
Anatomical Model: Basic Knee Joints
Code: ITSC - 073/ WM 215/ EM 236
(1 Unit) (0.5kg)



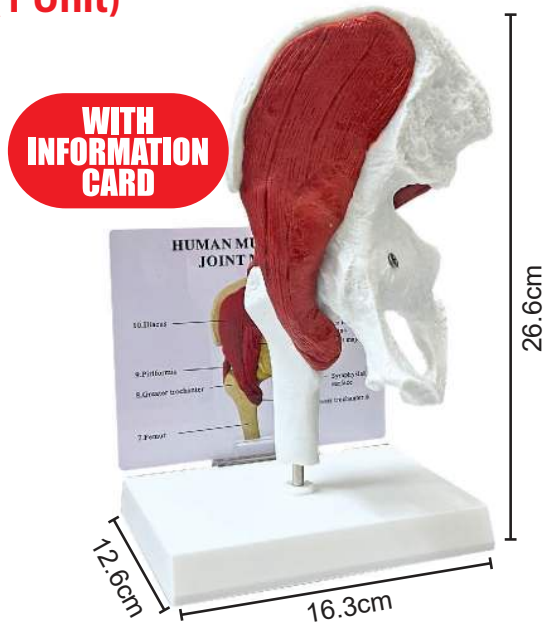
Anatomical Model: Life-Sized Human Heart (1 Unit) (0.5kg)
Code: ITSS - 040/ WM 215/ EM 236



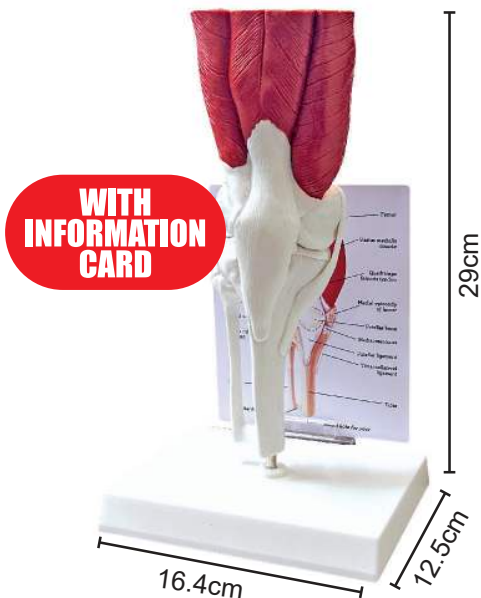
Anatomical Model: Muscled Shoulder Joints (1 Unit) (0.8kg)
Code: ITSS - 036/ WM 450/ EM 495



Anatomical Model: Muscled Hip Joints
Code: ITSS - 037/ WM 450/ EM 495 (0.4kg)
(1 Unit)



Anatomical Model: Muscled Knee Joints (1 Unit) (0.5kg)
Code: ITSS - 038/ WM 450/ EM 495

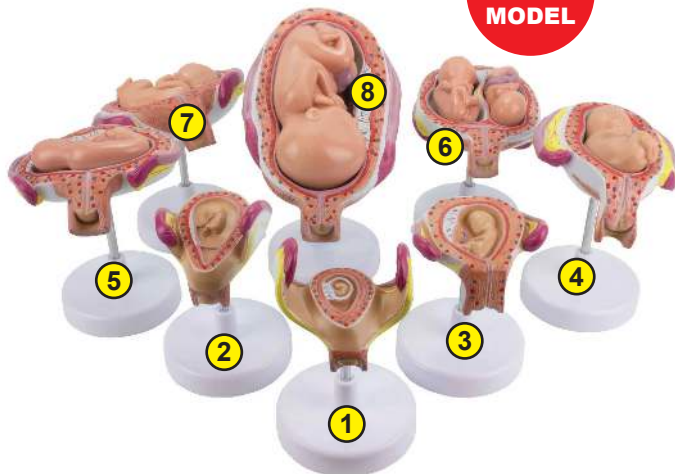


Model Pertumbuhan Embrio (3kg)
Code: ITSC - 094/ WM 885/ EM 974

Set mengandungi 8 peringkat model embrio:

- 1) Bulan pertama
- 2) Bulan ke-2
- 3) Bulan ke-3
- 4) Bulan ke-4
- 5) Bulan ke-5
- 6) Kembar bulan ke-5
- 7) Bulan ke-6
- 8) Bulan ke-7

8
MODEL



Anatomical Model: Lungs with Heart (1 Unit) (2kg)

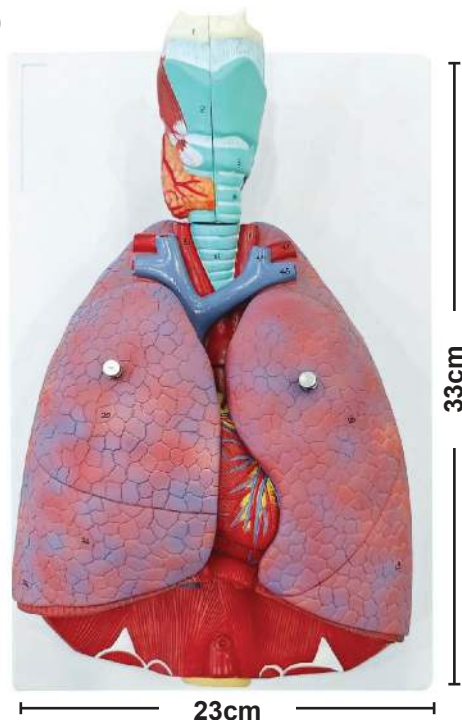
Code: ITSS - 041/ WM 520/ EM 570

- Model sistem pernafasan manusia dengan 7 bahagian boleh tanggal: laring (tekak) (2), paru-paru (2), jantung (2) dan bahagian utama, setiap bahagian mempunyai perincian yang jelas dan kukuh.
- Mempunyai lebih 70 penanda nombor yang membantu pembelajaran secara sistematik.
- Diperbuat daripada bahan PVC tidak toksik.



7 BAHAGIAN

- Bahagian utama paru-paru
- Laring (2)
- Paru-paru Kiri
- Paru-paru Kanan
- Jantung (2)

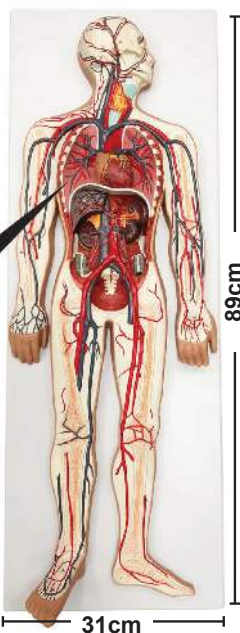
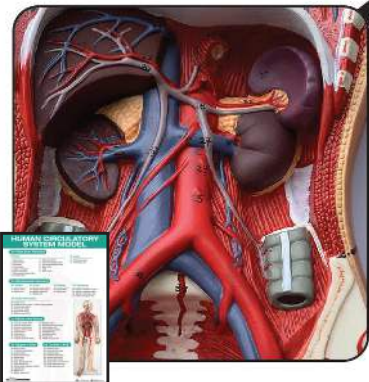


Model Sistem Peredaran Darah

Code: ITSS - 048/ WM 1190/ EM 1300 (5kg)

Saiz: 31 cm (L) x 89 cm (T)

Model peredaran darah manusia seluruh badan yang memaparkan arteri (merah) dan vena (biru) dengan jelas. Setiap arteri dilabel dengan nombor yang sepadan dengan nama pada kad.



Super Magnet Lab

Code : ITSC - 101/ WM 188/ EM 207



Set includes:

- 1 100 Magnet
- 2 5 Magnetic marbles
- 3 7 Magnetic wands
- 4 2 Metal bar magnets
- 5 2 Metal ring magnets
- 6 2 Mini horseshoe magnets
- 7 1 Large plastic horseshoe magnet



Penimbang Digital (0.4kg)
Code : ITMT - 026/ WM 90/ EM 99

SPESIFIKASI

Muatan Maksima (g) 7000
 Muatan Minima (g) 0
 Resolusi (g) 1
 Dibekalkan kuasa oleh Bateri AA
 Kuantiti Bateri 2
 unit \ tg, oz

Sukatan Pelajaran Matematik & Sains

Berkualiti Tinggi



Alat Penimbang (0.5kg)
Code : ITMT - 027/ WM 48/ EM 52

Spesifikasi Produk :
 0.5KG/1KG/2KG/3KG

Metarials :
 Plastik / Kualiti / Keselamatan / Mudah untuk menimbang

Warna :
 Merah / Biru / Kuning / Putih / Hijau (Pengukuran)



Tombol putar analog

Berkualiti Tinggi



Set Kad Aktiviti (Sains) Unit 1 (1.2kg)
Code : ITK - 018/ WM 125/ EM 145 (40 set)

29.8cm x 21cm x 40 keping



Mengikut Silibus Buku Teks Tahun 1

Sains Tahun 1 Dunia Sains Dan Teknologi Benda Hidup & Benda Bukan Hidup

Set Kad Aktiviti (Sains) Unit 2 (1.2kg)
Code : ITK - 019/ WM 125/ EM 145 (40 set)

29.8cm x 21cm x 40 keping



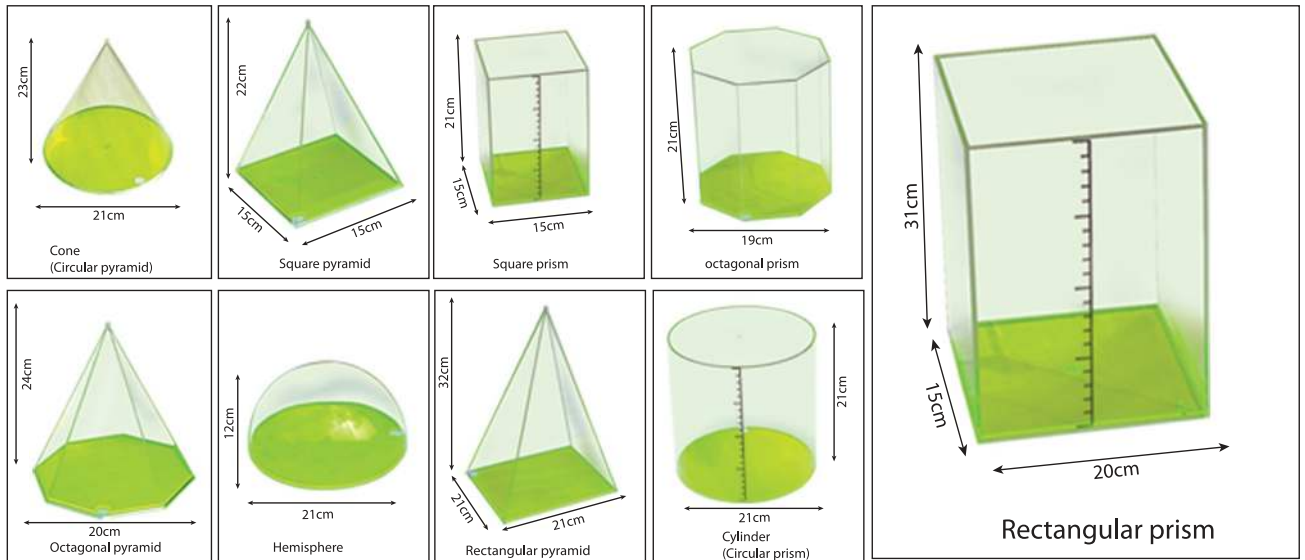
Mengikut Silibus Buku Teks Tahun 1

Manusia (Dunia Sains Dan Teknologi)

Jumbo Volume Relationship Set (7kg)

Code : GIGO - 1037/ WM 880/ EM 960 (10 Models)

- Used to explore geo shapes and the volume ratios.
- Fill with water or flowing solid through the hole on the base to recognize the volume ratio.
- Ideal size for class demonstration.



Measuring Balance (1.5kg)

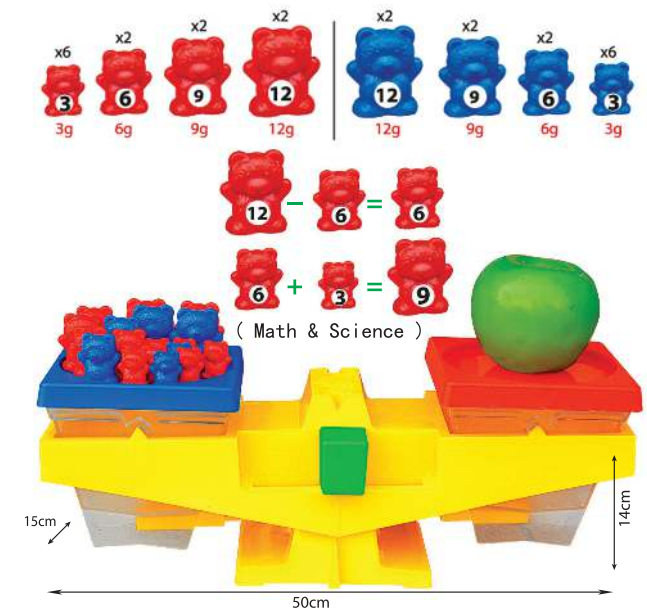
Code : GIGO - 1054/ WM 280/ EM 300

Size : (W)46 x (D)17 x (H)17cm



Junior Bear Balance (1kg)

Code : ITMT - 006/ WM 198/ EM 215



Big Wheel of Effects (1.1kg)

Code : GIGO - 7321/ WM 350/ EM 380

Chain Drives construction, you may be able to build with motor, chain gears, short frame, long drive axle, motor axle, red gear, and chain. A gearing down driving system is used to reduce the rotating speed of th drive gears and results in an increase in driven power.

Allow student to make many different things, using gears and chains and then use battery power to run them or the multi drive motor. Hours of fun.

Offer the option to design your own length and pattern of gear chain.

机器世界, 益智, 科学探索, 启发创意及科学思维, 多元的组合变化可以让学生自己动手制作, 学习结构原理, 设计, 发现物理变化, 从小对物理产生兴趣, 同时可以重复使用, 同时可以培养学生的动手能力, 生活自理能力及探索更强大的原动力!



7 MODEL
235
KOMPONEN
7款模型
235组件

One unit manual
book included
图片说明手册

FREE
STORAGE
BAG

What students can learn:
How To Build Structures
How Gears Work
How Gear Reduction Effects
Force And Motion



177 pcs

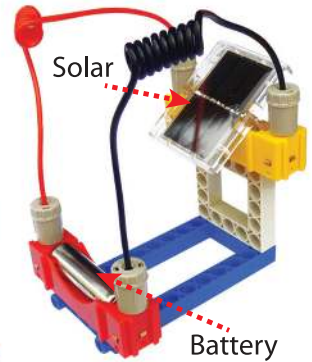
Solar Power (1kg)
Code : GIGO - 7349/ WM 320/ EM 352

Build your own solar powered vehicles

- Build 6 vehicles powered by a solar panel: plane, car, bulldozer, tractor...
- The solar panel can recharge a battery!
- Includes all parts required for assembly: solar panel, shovel, motor, battery compartment.
- Full colour 24-page instruction sheet with explanation of concept and models.
- Requires 1 rechargeable LR06 battery - not included.
- Ages 8 and up.

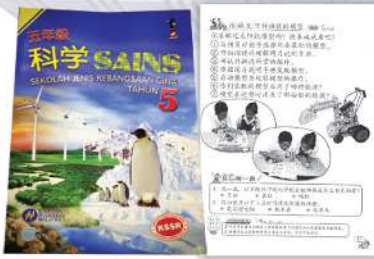
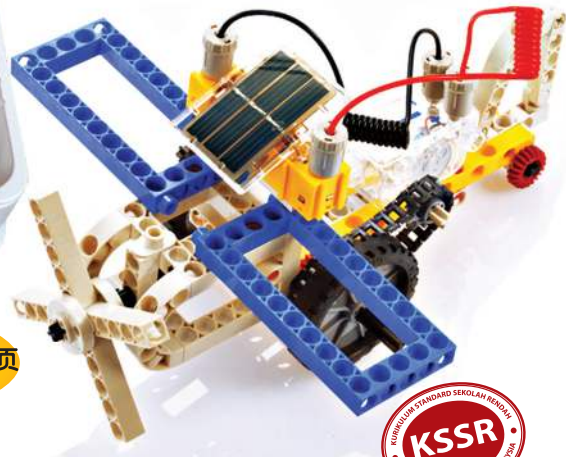


Guide Books



Introduction of Recharge Function

Use the red charger to charge the rechargeable AA battery under strong sunlight. Then insert it into the yellow battery holder to activate the model.



KSSR 五年级科学课程
活动五“可转换能的模型”第87页
Dunia Sains Dan Teknologi 5

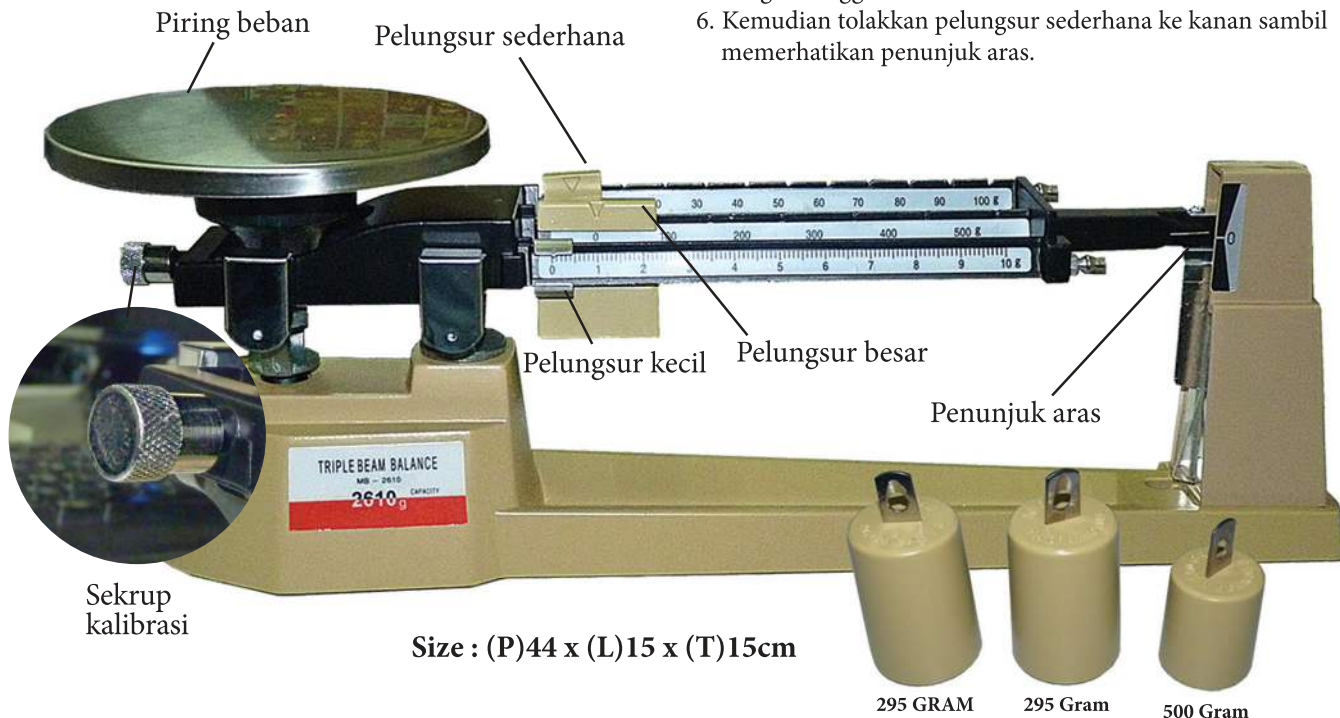


Neraca Tiga Palang (2.8kg)

Code : ITSC -052/ WM 440 / EM 484



1. Cara mengukur jisim menggunakan neraca tiga palang
2. Pastikan semua pelungsur berada pada senggat '0' (paling kiri)
3. Pastikan penunjuk aras berada pada kedudukan selari dengan senggat '0'
4. Letakkan objek yang hendak ditimbang di atas dulang dan tolakkan pelungsur besar ke kanan
5. Pastikan penunjuk aras berada pada kedudukan selari dengan senggat '0'
6. Kemudian tolakkan pelungsur sederhana ke kanan sambil memerhatikan penunjuk aras.



- 1 set
- **Beserta pemberat tambahan :**
- 295g x 2pcs
- 500g x 1pc
- **Digunakan untuk mengukur jisim sesuatu objek.**
- **Merupakan satu kaedah manual**

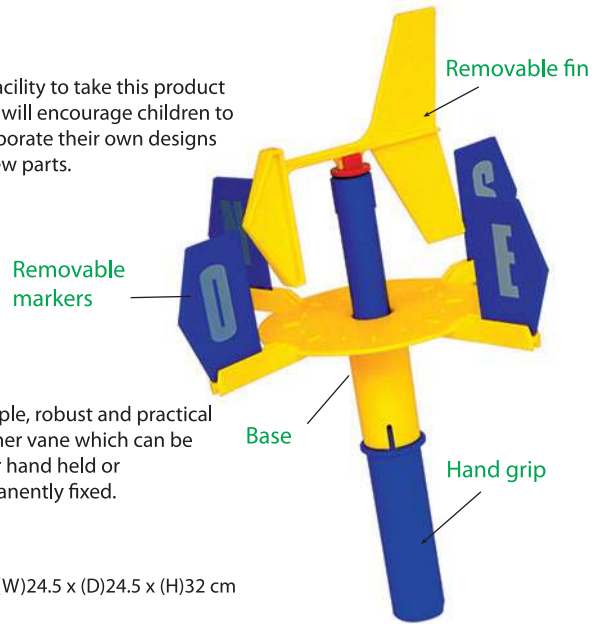
7. Pastikan penunjuk aras berada pada kedudukan selari dengan senggat '0'
8. Akhir sekali, tolakkan pelungsur kecil sehingga penanda aras adalah selari dengan '0'
9. Jumlahkan semua bacaan pada ketiga-tiga palang.
10. Jumlah bacaan • Palang besar = 300 g • Palang sederhana = 30g • Palang kecil = 3.4 g • Jumlah = 333.4 g Oleh itu, jisim objek adalah 333,4 g

Rain Gauge (Tolok Hujan) (0.2kg) Code : ITKT - 001/ WM 160/ EM176



Weather Vane (0.3kg) Code : ITKT - 002/ WM 180/ EM 195

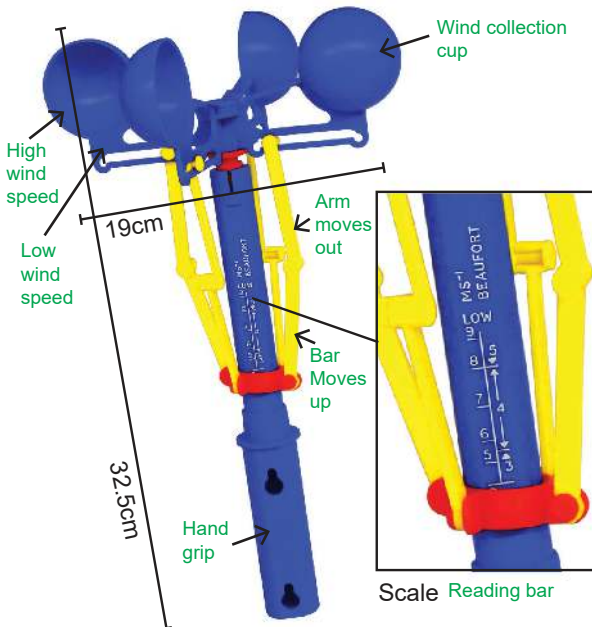
The facility to take this product apart will encourage children to incorporate their own designs for new parts.



A simple, robust and practical weather vane which can be either hand held or permanently fixed.

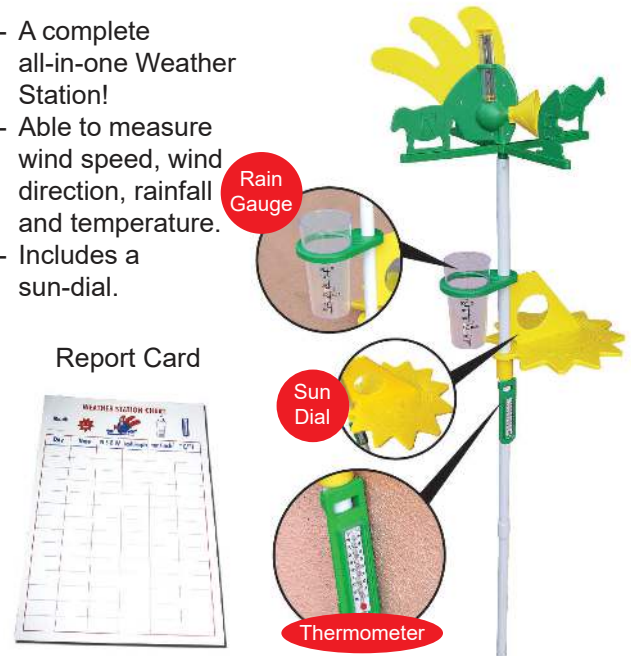
Size : (W)24.5 x (D)24.5 x (H)32 cm

Anemometer (0.3kg) Code : ITKT - 003/ WM 200/ EM 220



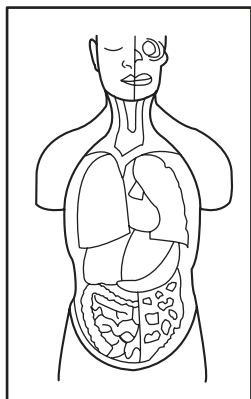
Upright Weather Station (1.1kg) Code : ITKT - 020/ WM 225/ EM 250

- A complete all-in-one Weather Station!
- Able to measure wind speed, wind direction, rainfall and temperature.
- Includes a sun-dial.

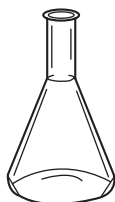


Cop Peralatan Sains
Code : COP - 003/ WM 80/ EM 88

(16pcs per set)
(0.4kg)



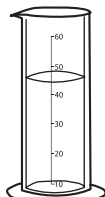
Saiz sebenar : 28 x 51mm



Kelalang Kon



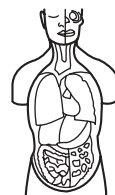
Bikar



Silinder penyukat



Corong Turas



Model Manusia



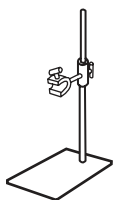
Mikroskop



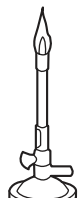
Tungku Kaki Tiga



Angkup luar



Kaki retort



Penunu bunsen



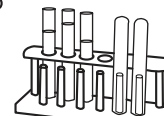
Neraca spring



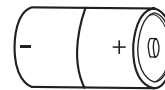
Kanta pembesar



Jam randik



Tabung uji



Sel kering

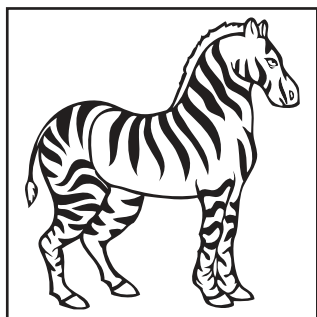


Magnet

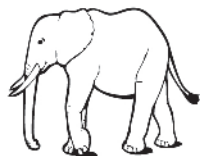
Cop Haiwan Liar

Code : COP - 006/ WM 70/ EM 77

(14pcs per set)
(0.4kg)



Cop saiz sebenar : 41 x 41mm



Gajah



Badak Air



Gorila



Kuda Belang



Zirafah



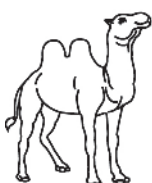
Beruang



Monyet



Singa



Unta



Rusa



kanggaru



Harimau



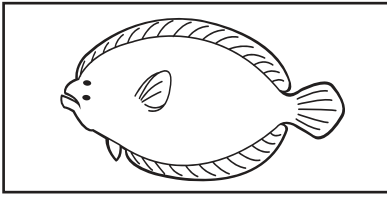
Serigala



Harimau Bintang

Cop Ikan Air Masin
Code : COP - 007/ WM 80/ EM 88

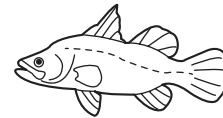
(16pcs per set)
(0.4kg)



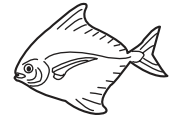
Cop saiz sebenar : 25 x 51mm



Ikan Kembung



Ikan Siakap



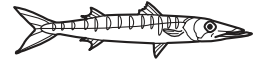
Ikan Bawal



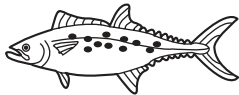
Ikan Tongkol



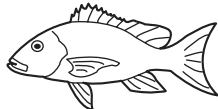
Ikan Cencaru



Ikan Kacang Lopek



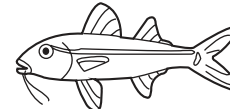
Ikan Tenggiri



Ikan Jenahak



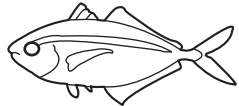
Ikan Gelama



Ikan Biji Nangka



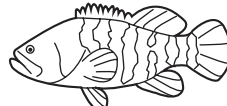
Ikan Selayang



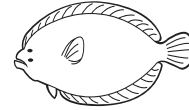
Ikan Selar Kuning



Ikan Merah



Ikan Kerapu



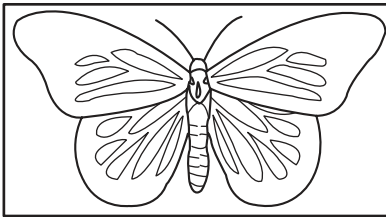
Ikan Sebelah



Ikan Parang

Cop Serangga
Code : COP - 010/ WM 80/ EM 88

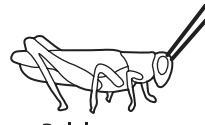
(16pcs per set)
(0.4kg)



Cop saiz sebenar : 28 x 51mm



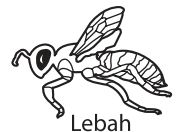
Papatung



Belalang



Lipan



Lebah



Cacing



Beluncas



Nyamuk



Lipas



Kerengga



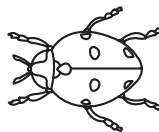
Kala Jengking



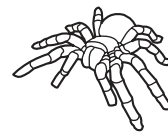
Rama-rama



Lalat



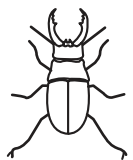
Kumbang



Labah-Labah



Mentadak



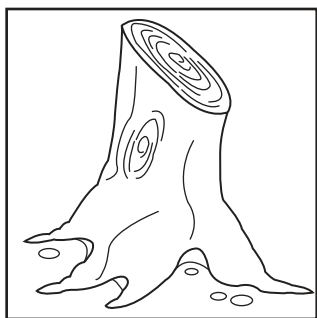
Kumbang

Cop Kenali Bahagian Pokok

Code : COP - 011/ WM 90/ EM 99

(18pcs per set)

(0.5kg)



Cop saiz sebenar : 41 x 41mm



Batang



Urut Selari



Tunas



Kudup



Duri



Daun



Buah



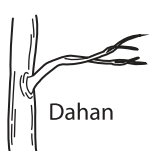
Bunga



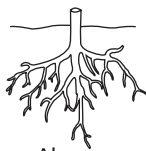
Kulit Kayu



Sulur Paut



Dahan



Akar Tunjang



Biji Benih



Akar Serabut



Tunggul



Urut Jejala



Tangkai



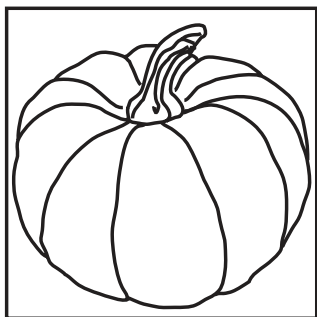
Getah

Cop Sayur-sayuran

Code : COP - 014/ WM 75/ EM 82

(15pcs per set)

(0.4kg)



Cop saiz sebenar : 41 x 41mm



Bawang Putih



Bawang



Labu Manis



Halia



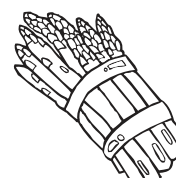
Cendawan



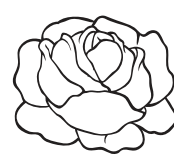
Bendi



Akar Teratai



Asparagus



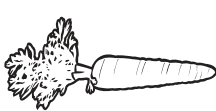
Kobis



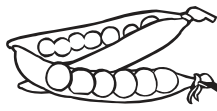
Terung



Kacang botor



Lobak



Kacang Pea



Lada Besar



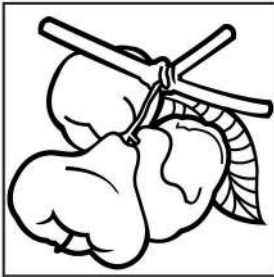
Petola

Cop Buah-buahan Tempatan

Code : COP - 015/ WM 70/ EM 77

(14pcs per set)

(0.4kg)



Cop saiz sebenar : 36 x 36mm



Manggis



Durian



Jambu Air



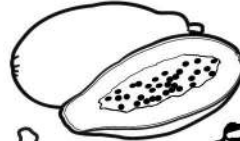
Nangka



Tembikai



Rambutan



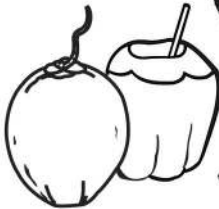
Betik



Mangga



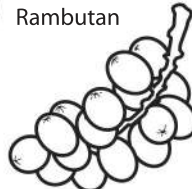
Nanas



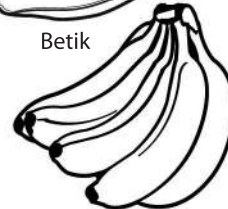
Kelapa



Belimbing



Langsat



Pisang



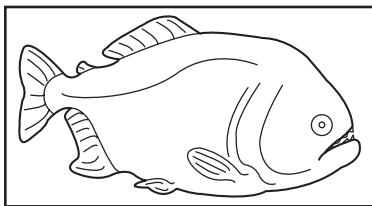
Jambu Batu

Cop Ikan Air Tawar

Code : COP - 016/ WM 80/ EM 88

(16pcs per set)

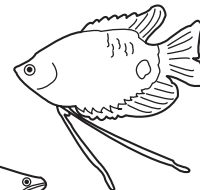
(0.4kg)



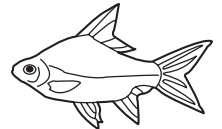
Cop saiz sebenar : 28 x 51mm



Ikan Tapah



Ikan Kalo



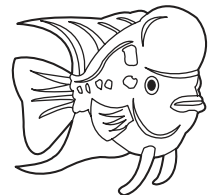
Ikan Sebarau



Ikan Belida



Ikan Haruan



Ikan Flower Horn



Ikan Kelisa



Ikan Puyu



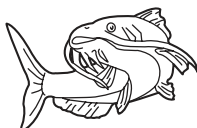
Ikan Toman



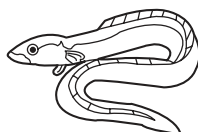
Ikan Kelah



Ikan Pirana



Ikan Baung



Ikan Belut



Ikan Gapi



Ikan Tilapia

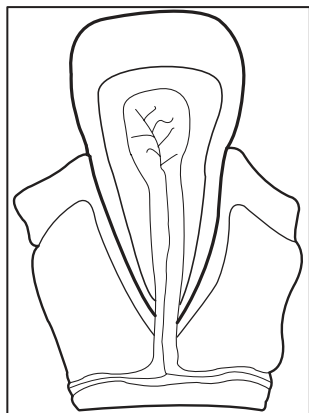


Ikan Belaga

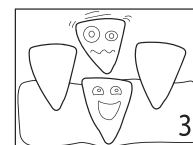
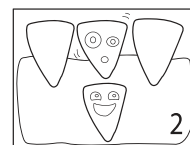
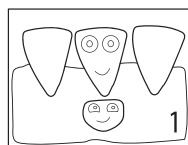
Cop Gigi Manusia

Code : COP - 034/ WM 94/ EM 103

(11pcs per set)
(0.4kg)



Cop saiz sebenar : 41 x 55mm



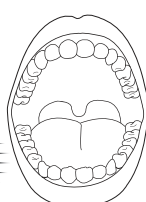
Struktur Gigi Geraham



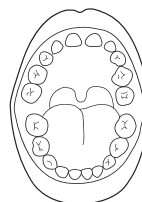
Struktur Gigi Kacip



Struktur Gigi Taring



Gigi Kekal



Gigi Susu



Gigi Geraham



Gigi Kacip



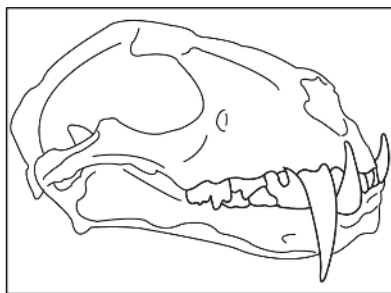
Gigi Taring

Dunia Sains dan Teknologi Tahun 3
Unit 2 "Manusia" Muka Surat 17-28
三年级科学与工艺世界
第二课 "人类"
18-25面

Cop Gigi Haiwan

Code : COP - 038/ WM 112/ EM 124

(16pcs per set)
(0.5kg)



Saiz : 51 x41mm



Gigi Beruang Kutub



Gigi Tupai



Gigi Serigara



Gigi Gajah



Gigi Cimpanzee



Gigi Kelawar



Gigi Lembu



Gigi Aniina



Gigi Buaya



Gigi Harimau



Gigi Kambing



Gigi Kuda



Gigi Arnab



Gigi Kucing



Gigi Beruang



Gigi Tikus



Dunia Sains dan Teknologi Tahun 3
Unit 3 "Haiwan" Muka Surat 40-41
三年级科学与工艺世界
第三课 "动物"
42-44面

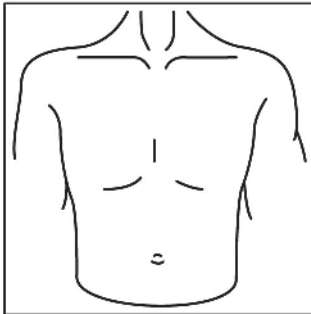
Cop Anggota Badan Manusia

Code : COP - 065/ WM 72/ EM 79

(14pcs per set)

(0.4kg)

Saiz sebenar: 41mm x 41mm



Torso



Betis



Kepala



Tangan



Kaki



Telinga



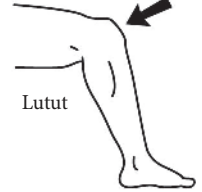
Hidung



Lidah



Lengan



Lutut



Bibir



Kening



Mata



Gigi

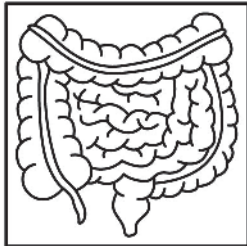
Cop Organ Torso Manusia

Code : 066/ WM 72/ EM 79

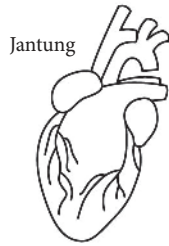
(14pcs per set)

(0.4kg)

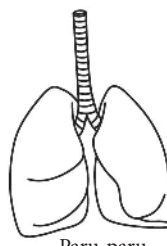
Saiz sebenar: 32mm x 32mm



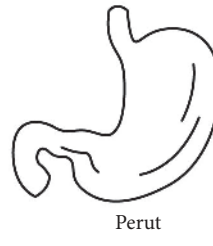
Usus



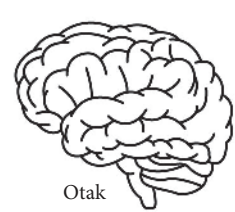
Jantung



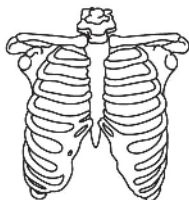
Paru-paru



Perut



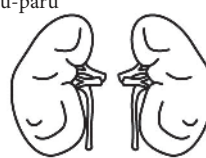
Otak



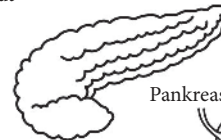
Tulang Torso



Tengkorak



Ginjal



Pankreas



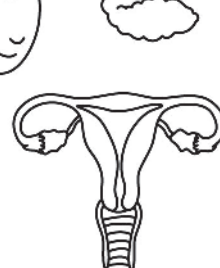
Pundi Kencing



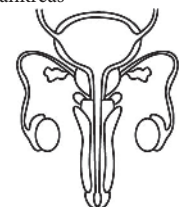
Hati



Limpa



Organ Pembiakan Wanita



Organ Pembiakan Lelaki